



SchspIN

Gedanken einer Schauspielerin - An Actress's Thoughts

Addressing Bias & Combatting Stereotypes

FIA's Gender Equality Thursday N°2. 7.10.21

Belinde Ruth Stieve / NEROPA

NEROPA™ Neutral Roles Parity



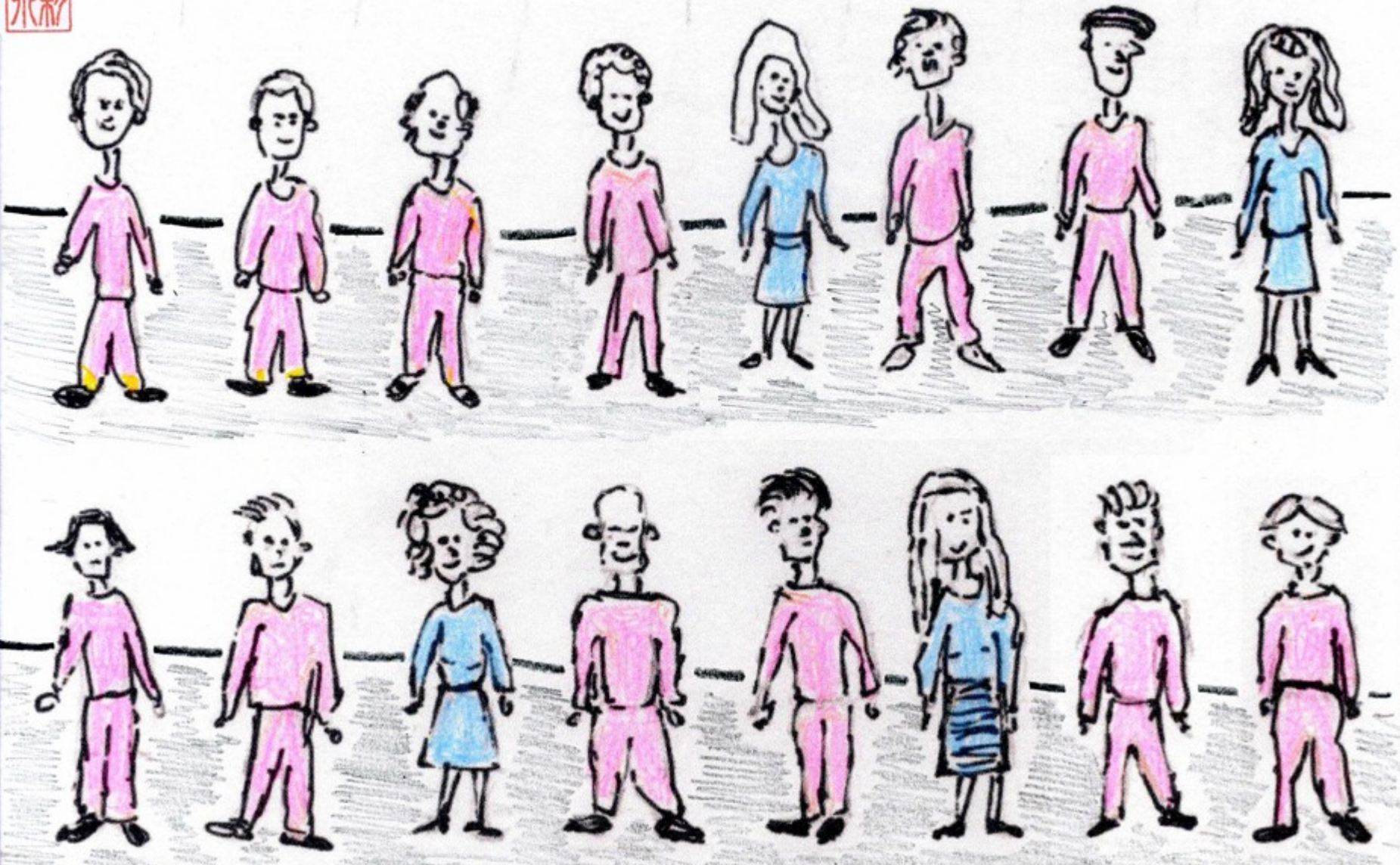
Belinde Ruth Stieve / NEROPA. 7. Oct. 21. FIA's Gender Equality Thursday N°2

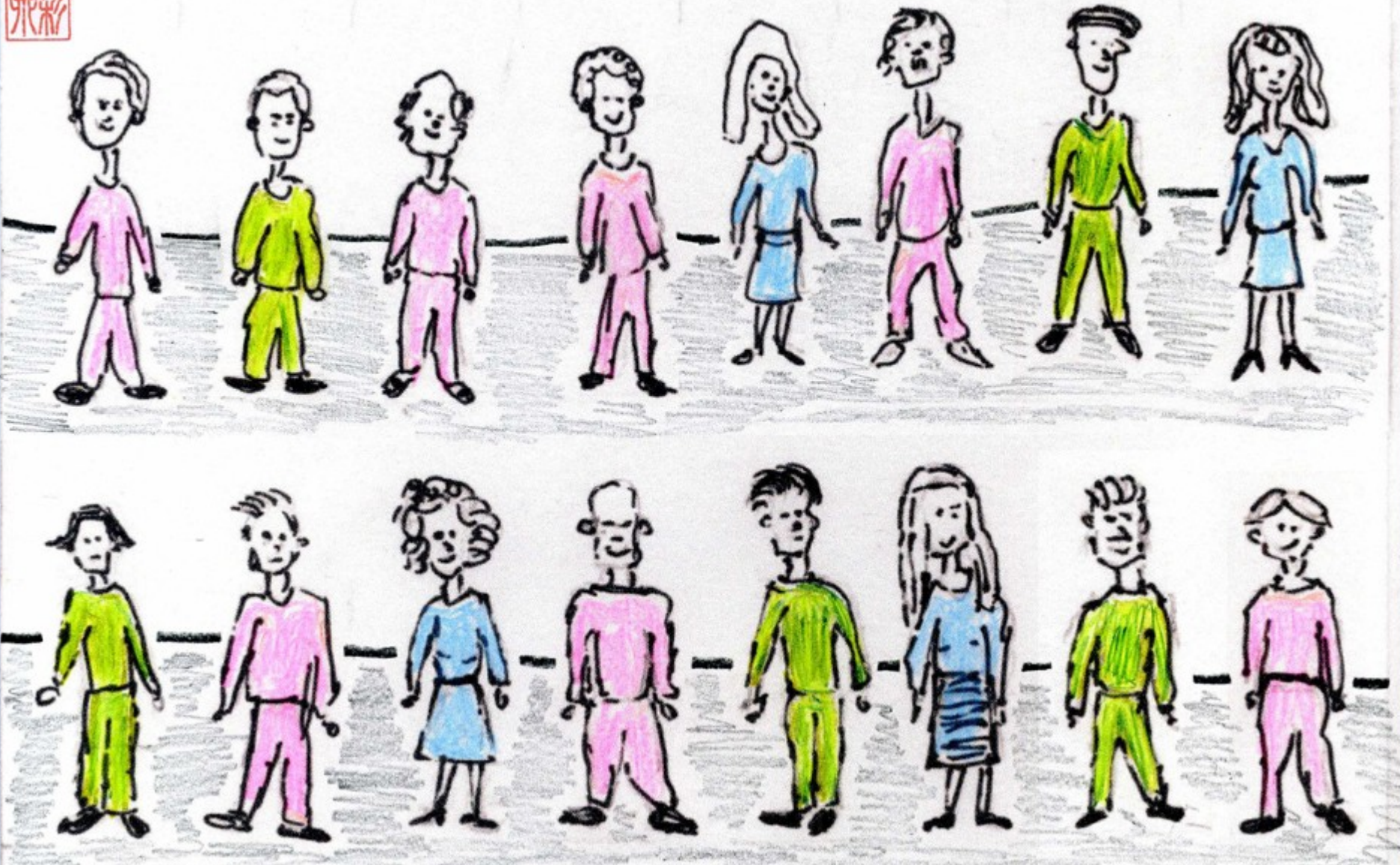


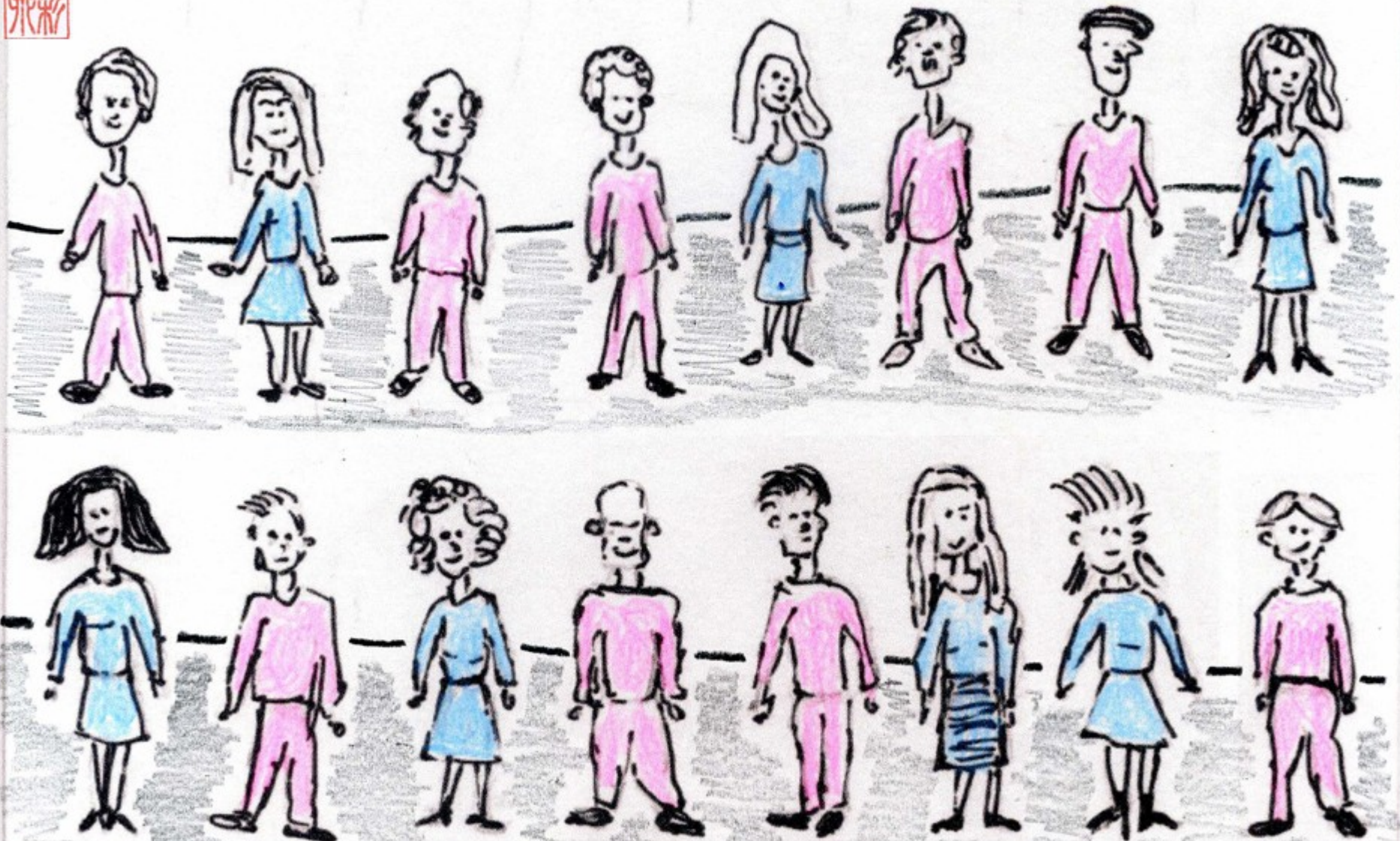
NEROPA™ was developed to

- Increase the proportion of women in a script, play, novel or game
- Diversify the cast
- Sensitize and raise awareness among those involved











Belinde Ruth Stieve / NEROPA. 7. Oct. 21. FIA's Gender Equality Thursday N°2

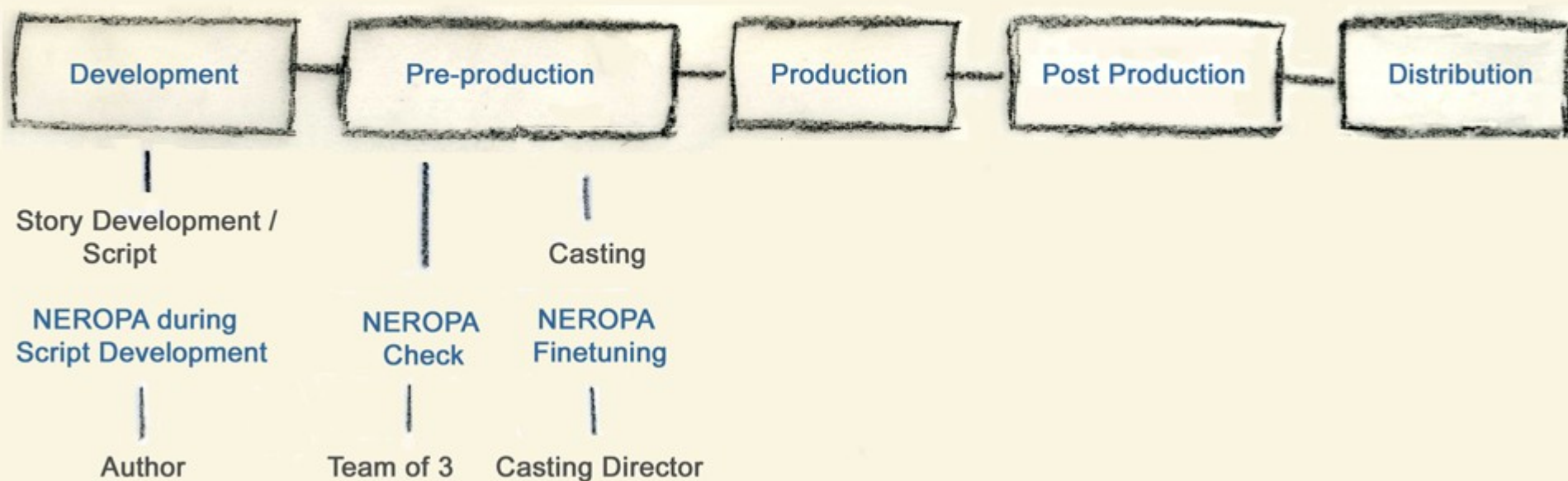
NEROPA-Questions

- *Does this character have to be male?*
(NEROPA Check)
- *Does this character have to be white, young, good-looking, able-bodied, slim, middle-class, non-pregnant...?* (NEROPA Finetuning)



Using NEROPA in a Film Production

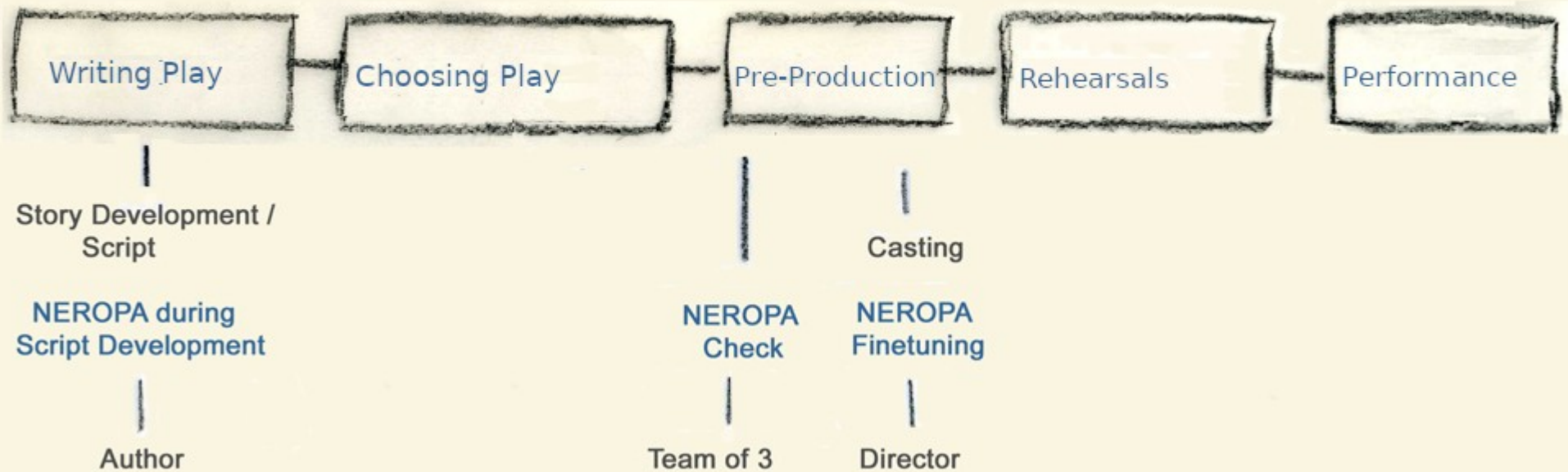
Belinde Ruth Stieve, 2018.





Using NEROPA in a Theatre Production

Belinde Ruth Stieve,



HIS GIRL FRIDAY (1940) based on play THE FRONT PAGE (1928)



Belinde Ruth Stieve / NEROPA. 7. Oct. 21. FIA's Gender Equality Thursday N°2

TWELVE ANGRY MEN by Reginald Rose

TV play 1954, stage play 1955, film 1957



TWELVE ANGRY MEN by Reginald Rose

TV movie 1997





SchspIN

Gedanken einer Schauspielerin - An Actress's Thoughts

NEROPA

NEROPA.stieve.com

Blog

SchspIN.stieve.com

Website

belinderuthstieve.de

Twitter/Insta

[@SchspIN](https://twitter.com/SchspIN)

Mail

SchspIN@posteo.de